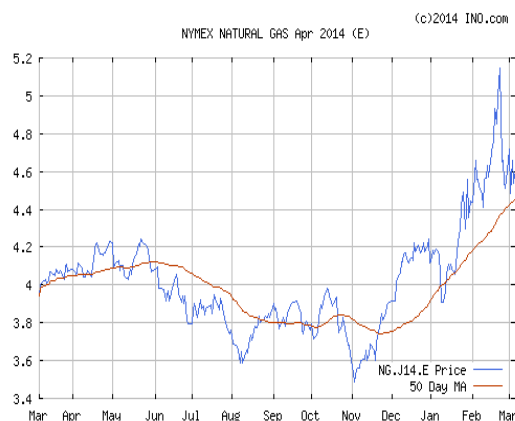


Volume 517 March 6, 2014

Market- Natural gas prices continue to trade very high for the next 12 months. Rapidly depleting natural gas storage inventories, natural gas prices for daily supplies for the month of March are still high. There have been 33 gas critical days in 2014. Prices are also supported by global increasing demand for Liquefied Natural Gas (LNG). There was a large withdrawal from storage reported again this morning. Gas is now at below average storage levels as seen on the graph to the right and is below last year levels and below five-year average. The US gas traditional rotary rig count decreased 7 rigs and horizontal drilling decreased 1 rig. Gas production levels due to shale drilling are still strong although many wells are frozen. Natural gas is very attractive to fix now and for next winter.

The Crude oil price for April is lower this week at \$100.86 per barrel. Heating oil is lower at \$2.98 per gal. Unleaded gasoline futures are higher this week at \$2.94 and gasoline at the pump is around \$3.59...in Indiana. The natural gas storage report this week was a withdrawal of **152BCF**; storage is **908BCF lower** than last year and **758BCF below** than the 5 year average.



Above Graph – Apr 2014 NYMEX gas futures

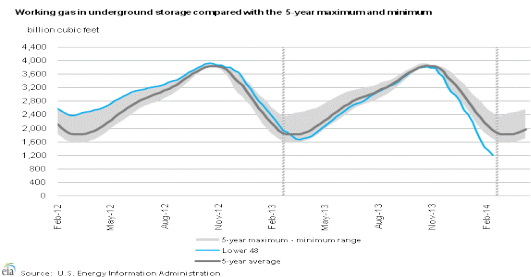
Extended Temperature Forecast: Chicago Area

	Thu	Fri	Sat	Sun	Mon
High	32	43	36	40	50
Low	20	31	16	31	36

Storage Statistics: (BCF) Billion Cubic Ft

This Week	Last Year	5 Year Ave.
1,196	2,104	1,954

The total is a decrease of 152 BCF from last week.



Above Graph - Storage levels as of March 6

Comparative Fuels: Futures Prices for Apr

	Price	Compared to Nat Gas
Natural Gas (therm)	\$.4565	\$.4565
Propane (gal)	\$ 1.11	\$ 1.21
Crude Oil (barrel)	\$ 100.86	
Heating Oil (gal)	\$ 2.98	\$ 2.14
Unleaded Gas (gal)	\$ 2.94	

North American Traditional Nat. Gas Rig Count:

This week	335
Last week	342
Year Ago this week	420

US Horizontal Rig Count:

This week	1181
Last week	1182
Year Ago this week	1141

NGI Chicago for Mar 2014 \$1.082

